



THE GEVOREST COMPANY





The **design** of a mattress begins with the meticulous study and understanding of the various ways in which it is used in our lives. **Design** does not simply refer to its decorative aspect nor does it necessarily focus on the aesthetics of the product. **Design** first and foremost has to do with the functionality of the product, and to **design** something well you must “get it”; that is, identify its purpose, research it, try it, experiment, combine materials, architectures and opinions. To achieve a unique and great design, you need people with passion and dedication. **Design** is all about the details.

This is the essence of **Ypnos Gold**

#it's**YpnosGoldTime**





Yawning is a natural human reflex. Every person «designs» their own unique way of yawning, thus creating an expression of their distinctive physiology and natural needs. Yawning may be accompanied by a stretch... or may not. It may be expressed with sounds or «hidden» out of politeness. When we yawn, our ears become firmly «shut», isolating us from our surroundings. This is why a yawn is such a personal experience. Additionally, our faces may contort into various weird and funny grimaces. There are no rules or guidelines to dictate how we yawn. Rather, it is an action simply associated with the pleasant feeling of a good night's sleep or the desire to go to bed.

When that time comes... #it's**YpnosGoldTime**

#it's**YpnosGoldTime**



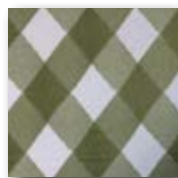
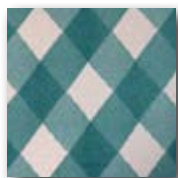


#it'sYpnosGoldTime

Our sensory reaction to a good mattress has to do with a combination of “emotions” which cannot easily be distinguished or analysed. Advances have been made which have brought about the “post - **Ypnos Gold** - era”. Traditional double-sided mattresses have been replaced by the architecture of the one-sided mattress, and classic white fabrics have been upgraded to “Rich Modern” colours. Countless tests were conducted on a variety of materials in order to determine the best possible combinations for Comfort and Support.

When creating a product, we know that we will be judged based on its performance, and thus the focus must be on the end result so as “to be identified as the quality standard”. Many years ago, we wanted to create a product that was beyond great; we wanted it to be unsurpassed. And the result is evident! We believe that it is you, our customer, who has contributed to this result with your preference for products into which a great deal of thought and creativity has been invested.

#it'sYpnosGoldTime





Ypnos Gold... at your service!

With your **Ypnos Gold** you may select the following:

- Size (any dimensions of your choosing)
- Level of firmness (Soft – Medium, Medium – Firm, Firm)
- Different level of firmness on each side (a choice of two combinations depending on the couples' preference)
- Divan (base) from the **Ypnos Collection** (Type, size based on the mattress, design, colour, and fabric type)
- Headboard from the **Ypnos Collection** (Type, size-based on the divan, design, colour, and fabric type)
- Upholstery Color (A selection of Rhombus and monochrome Fabrics)

#it'sYpnosGoldTime



Ypnos

THE GEVOREST COMPANY



NICOSIA

Athalassa Store

Athalassis Avenue 95
Tel: 22587122

Egkomi Store

October 28th Street 23, Egkomi
Tel 22587121

Latsia Store

Giannos Kranidiotis 100, Latsia
Tel 22587107

Aglantzia Store

Larnacos Avenue 52, Aglantzia
Tel 22587108

LIMASSOL

Kolonakiou Store

Kolonakiou str. 54, Ag. Athanasios
Tel: 22587125 – 22587134

Makedonias Store

Spyrou Kyprianou Avenue 57
Tel: 22587106

West Limassol Store

Paphou Street 6
Tel: 22587136

MY MALL Store

285 Franklin Roosevelt, MY MALL
1st floor, Tel: 22587135

LARNACA

Larnaca Store

Spyrou Kyprianou Avenue
& Agioi Anargiroi Avenue
Tel: 22587124

PAPHOS

Paphos Store

Mesogis Avenue 17B
Tel: 22587126

PARALIMNI

Paralimni Store

Sotiros Avenue 14
Tel : 22587127



The Gevorest Company | www.gevorest.com | Find us on Facebook

